

GAMA-SIGMA: Exploring Galaxy Structure Through Modelling

21/04/11

Lee Kelvin



University
of
St Andrews

Galaxy And Mass Assembly (GAMA) Hubble Tuning-Fork

G00609396

G00508412

G00272822

Groups/
Mergers

G00238211

G00303096

G00560238

G00230636

G00572402

Unbarred Spirals

Ellipticals

G00055143

G00230675

G00047674

GAMA



G00238952

G00600168

Irregulars

Edge-on
Spirals

G00583427

G00484729

G00611220

G00383312

G00240202

Barred Spirals

G00229306

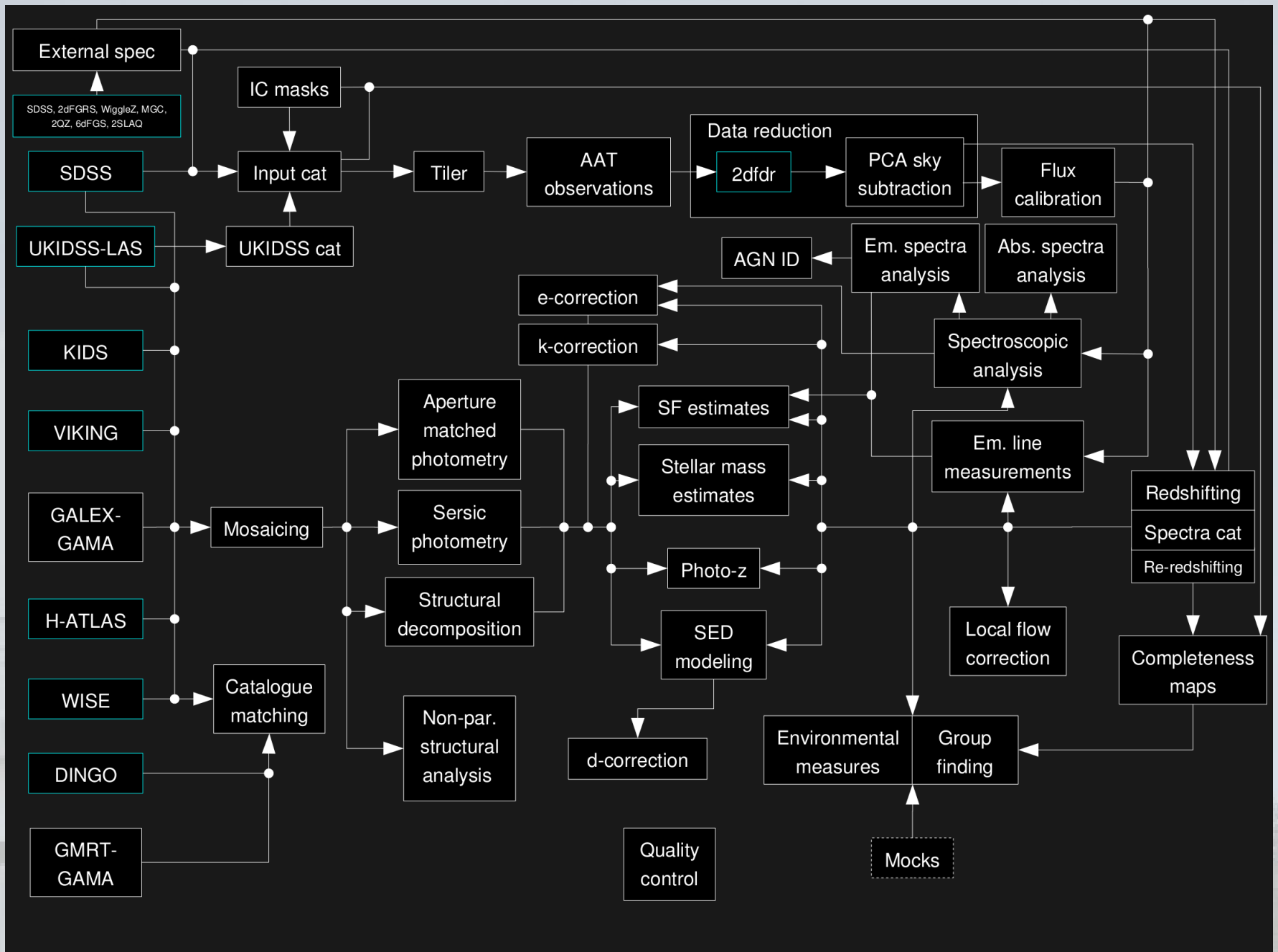
G00619104

G00493832

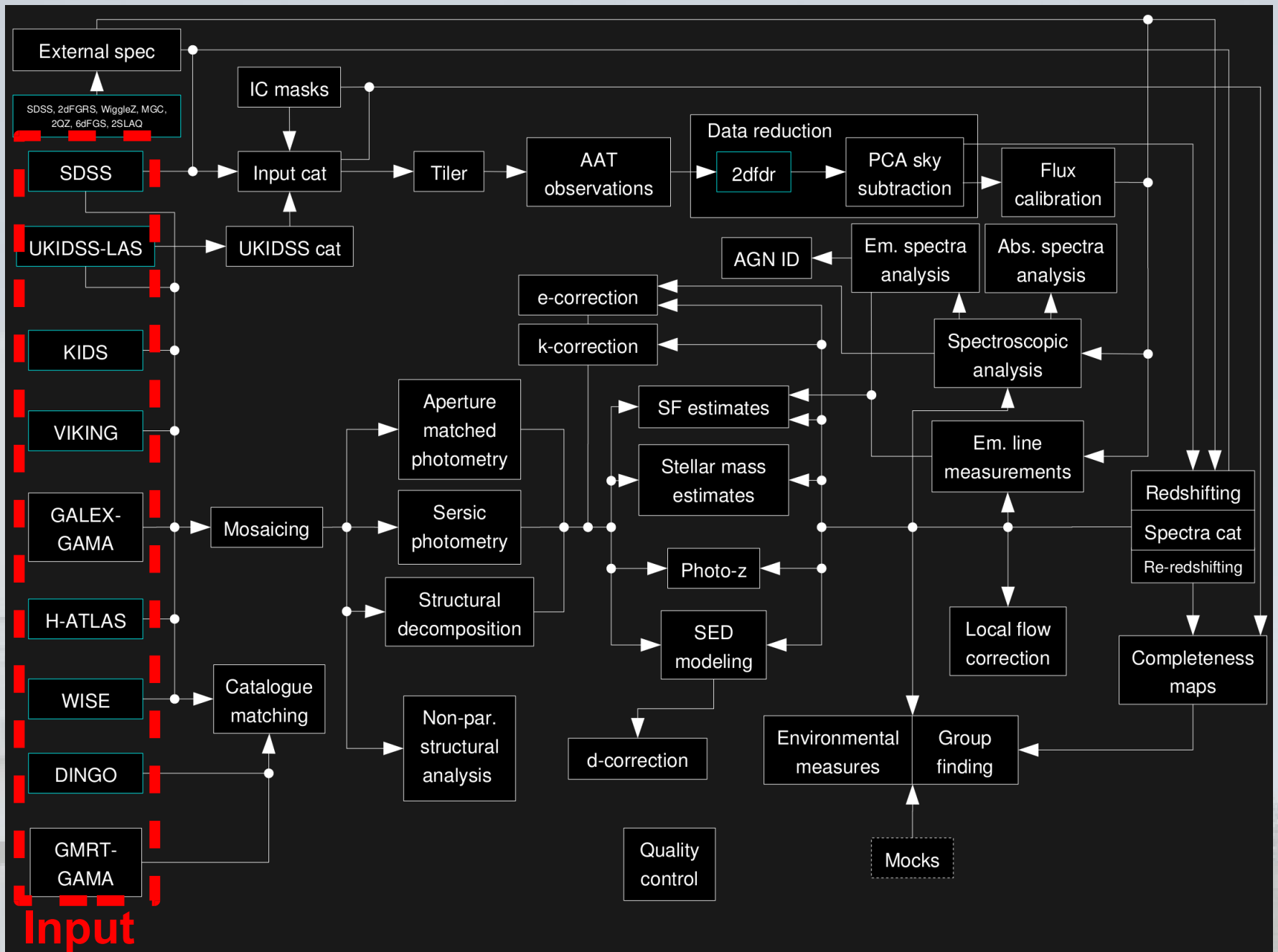
G00537361

Kru 40"×40"

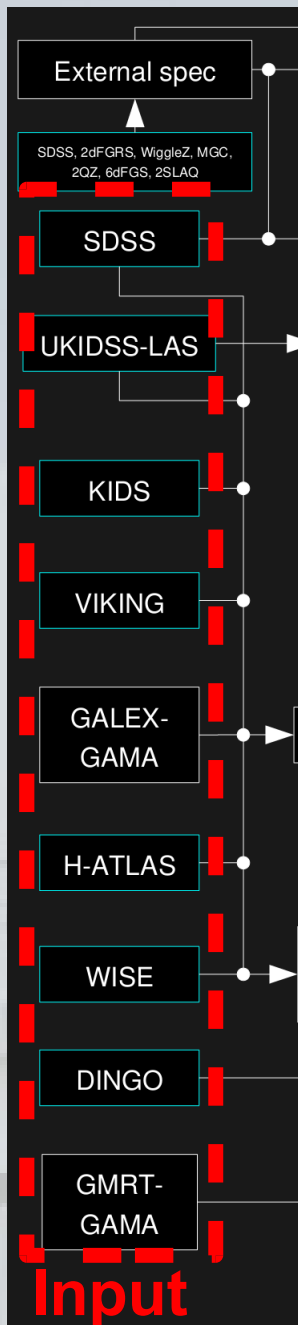
Dataflow



Dataflow

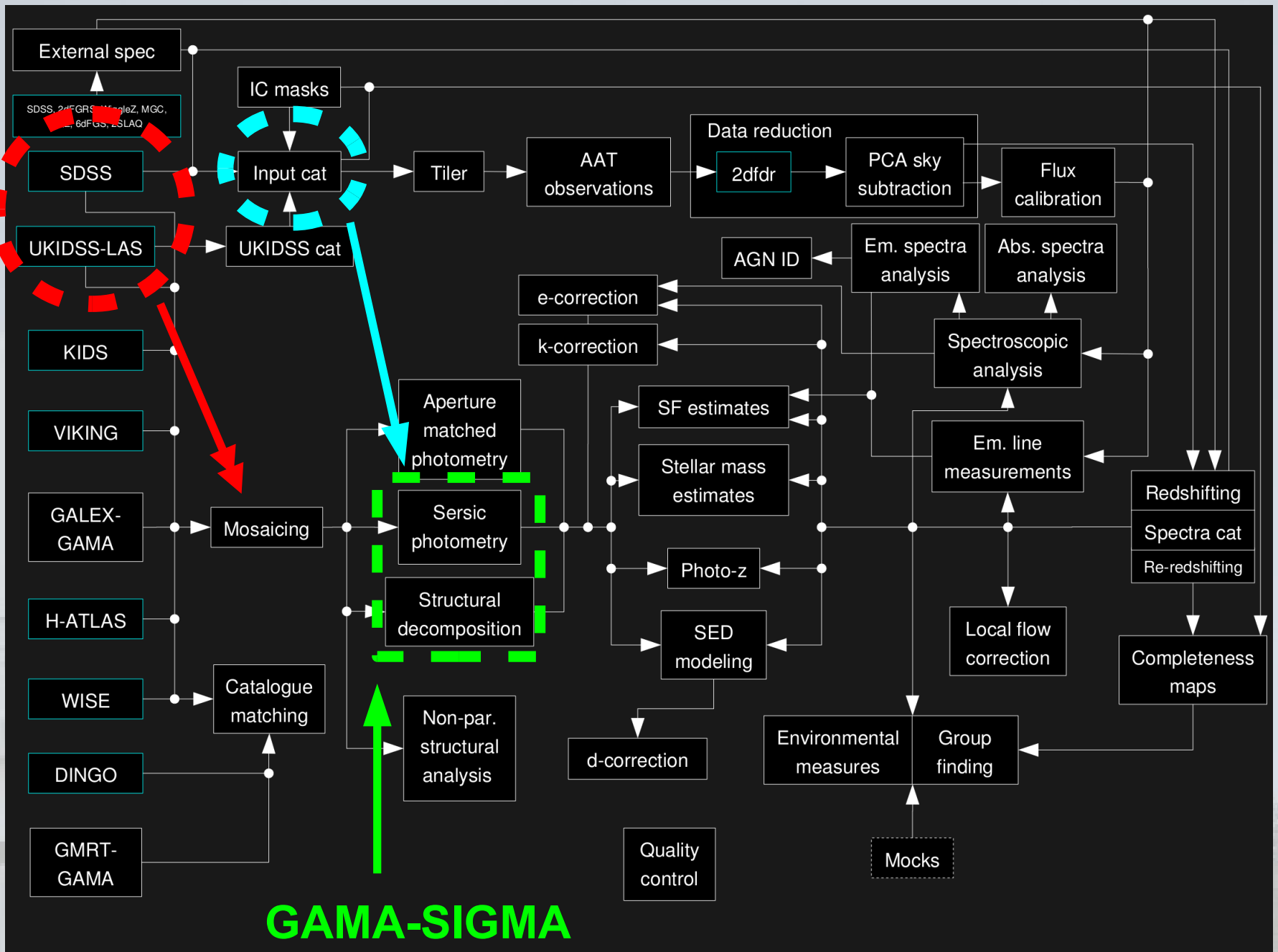


Dataflow



- **Measure structural properties of a huge number (100,000s) of galaxies in an automated, repeatable, rapid and high fidelity manner.**
- **Use multi-wavelength data to trace different stellar populations within galaxies.**
- **This information allows us to infer the underlying dynamical and morphological properties.**
- **Ultimately we want to understand the evolution and formation of galaxies.**

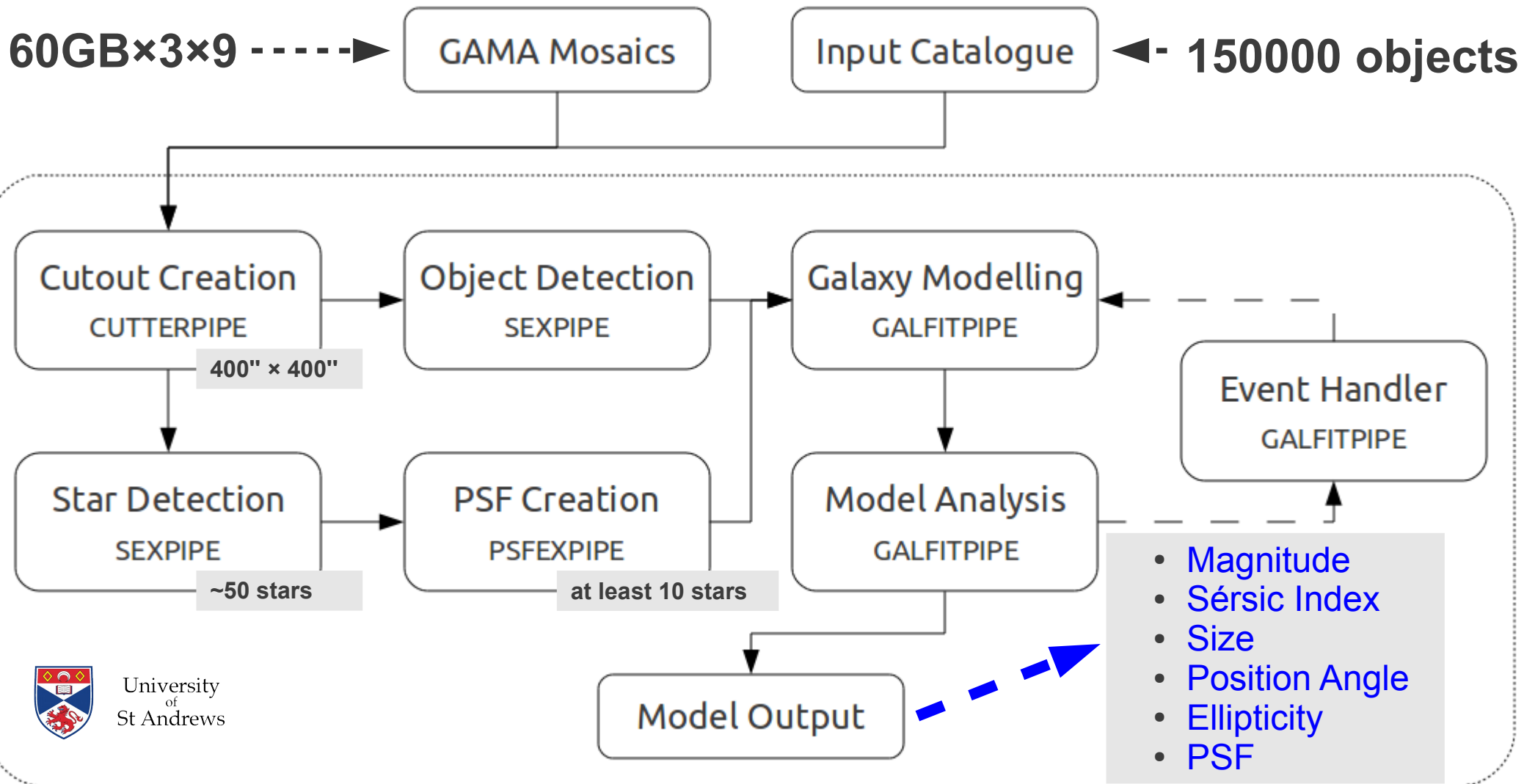
Dataflow



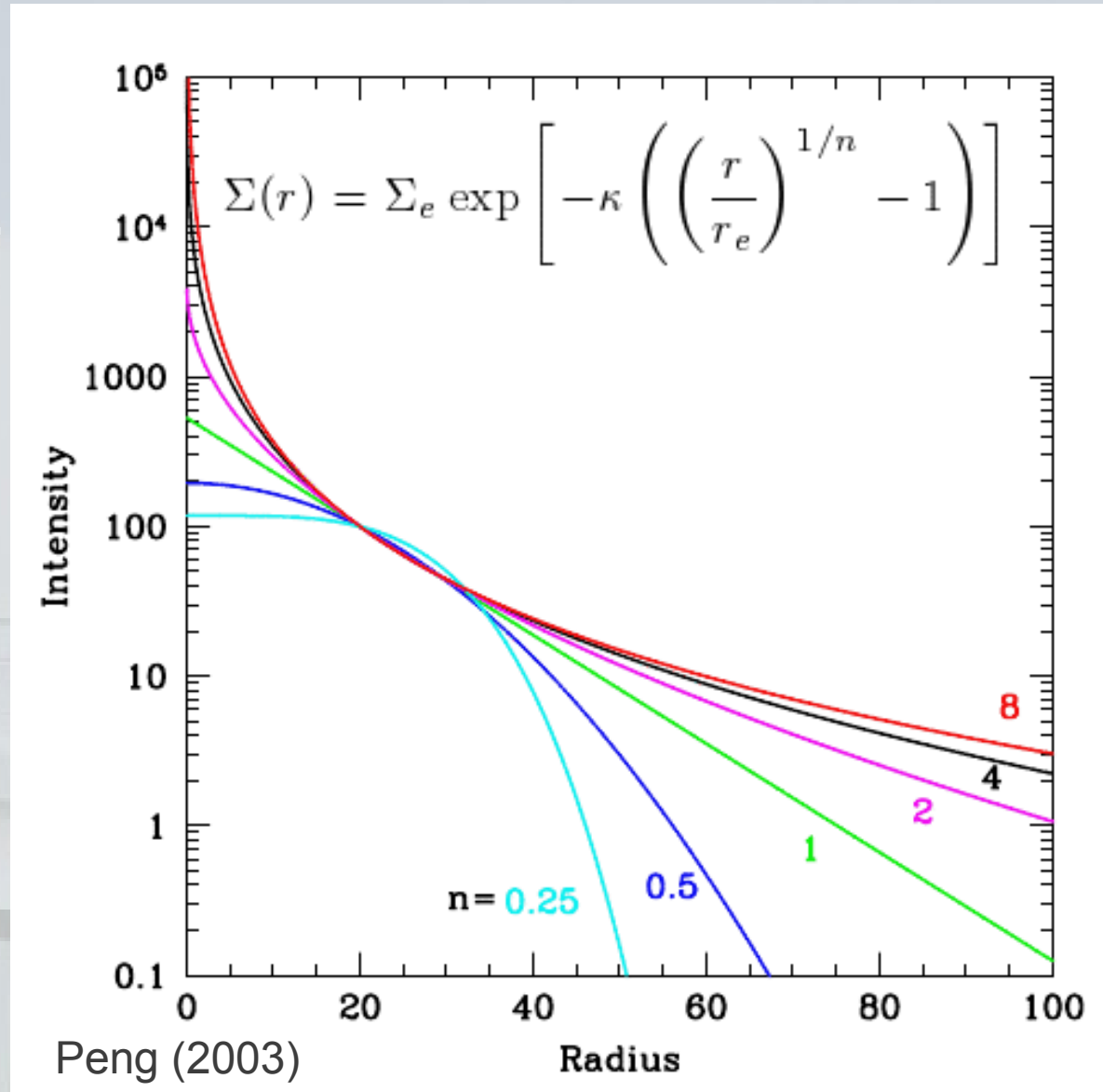
SIGMA: *Structural Investigation of Galaxies via Model Analysis*

→ Written in R

→ Run time: 20 sec!



The Sérsic Profile



Jose Luis Sérsic, 1963

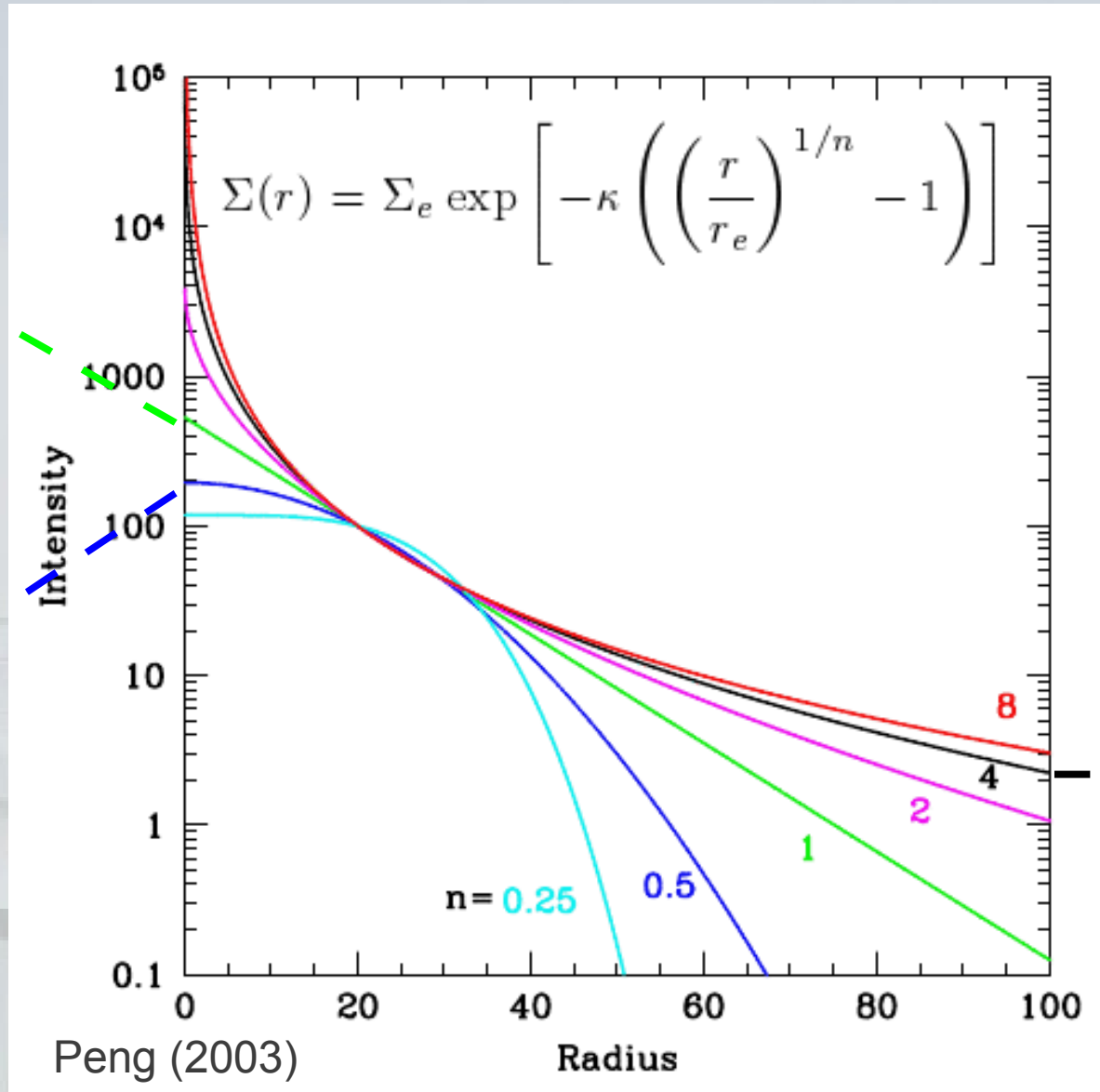
The Sérsic Profile



Exponential
(eg - disks)



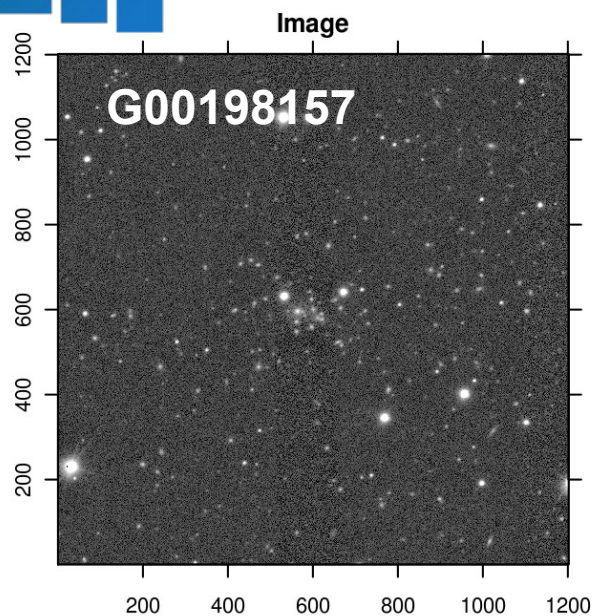
Gaussian
(eg - stars)



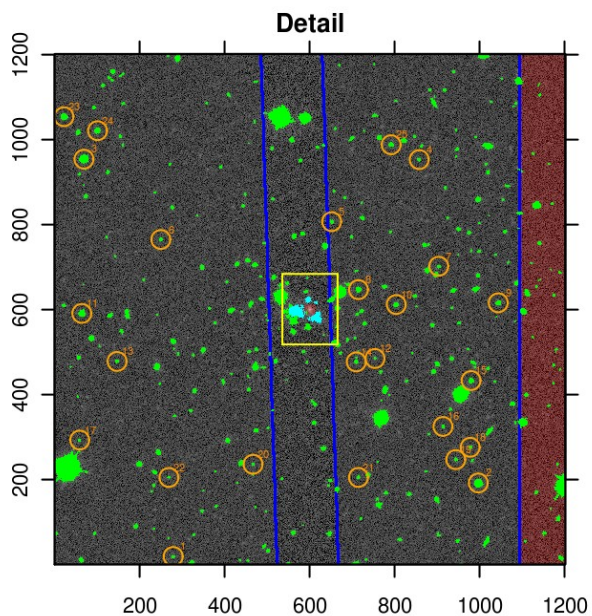
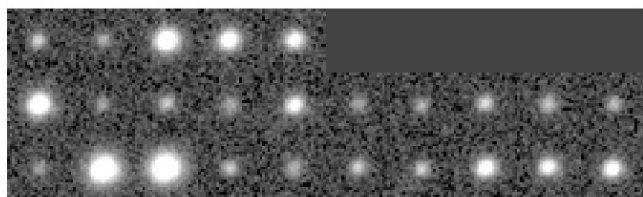
Jose Luis
Sérsic, 1963



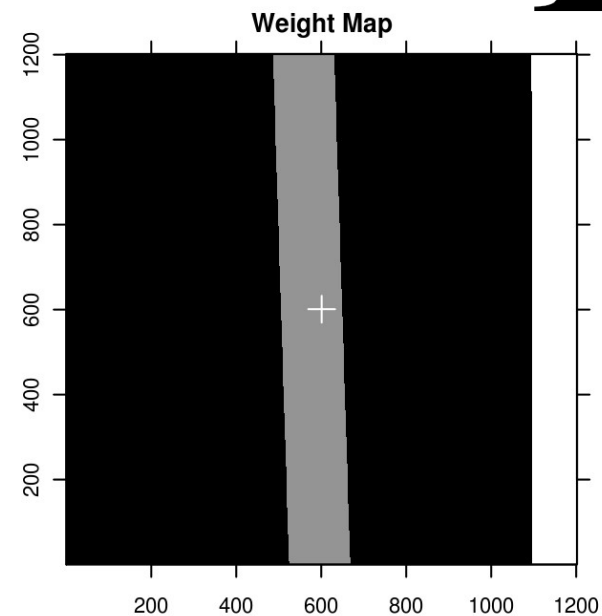
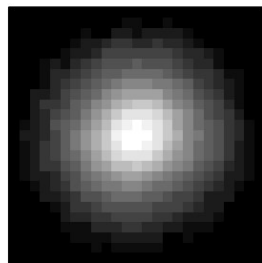
de Vaucouleur
(eg - ellipticals/
bulges)



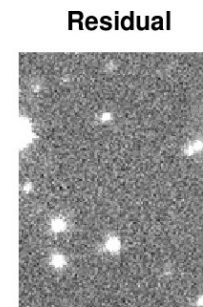
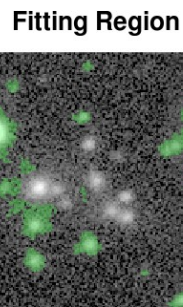
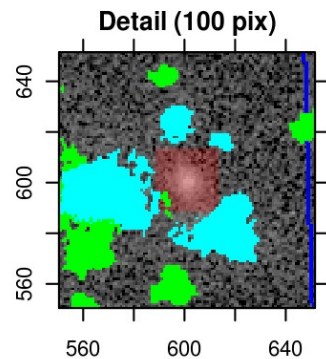
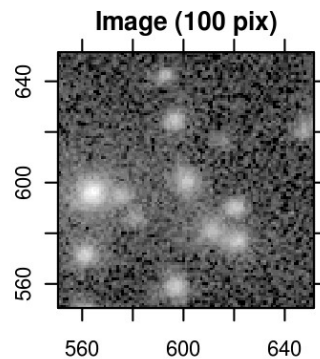
PSF Star Sample



PSF



PSF Star Residuals

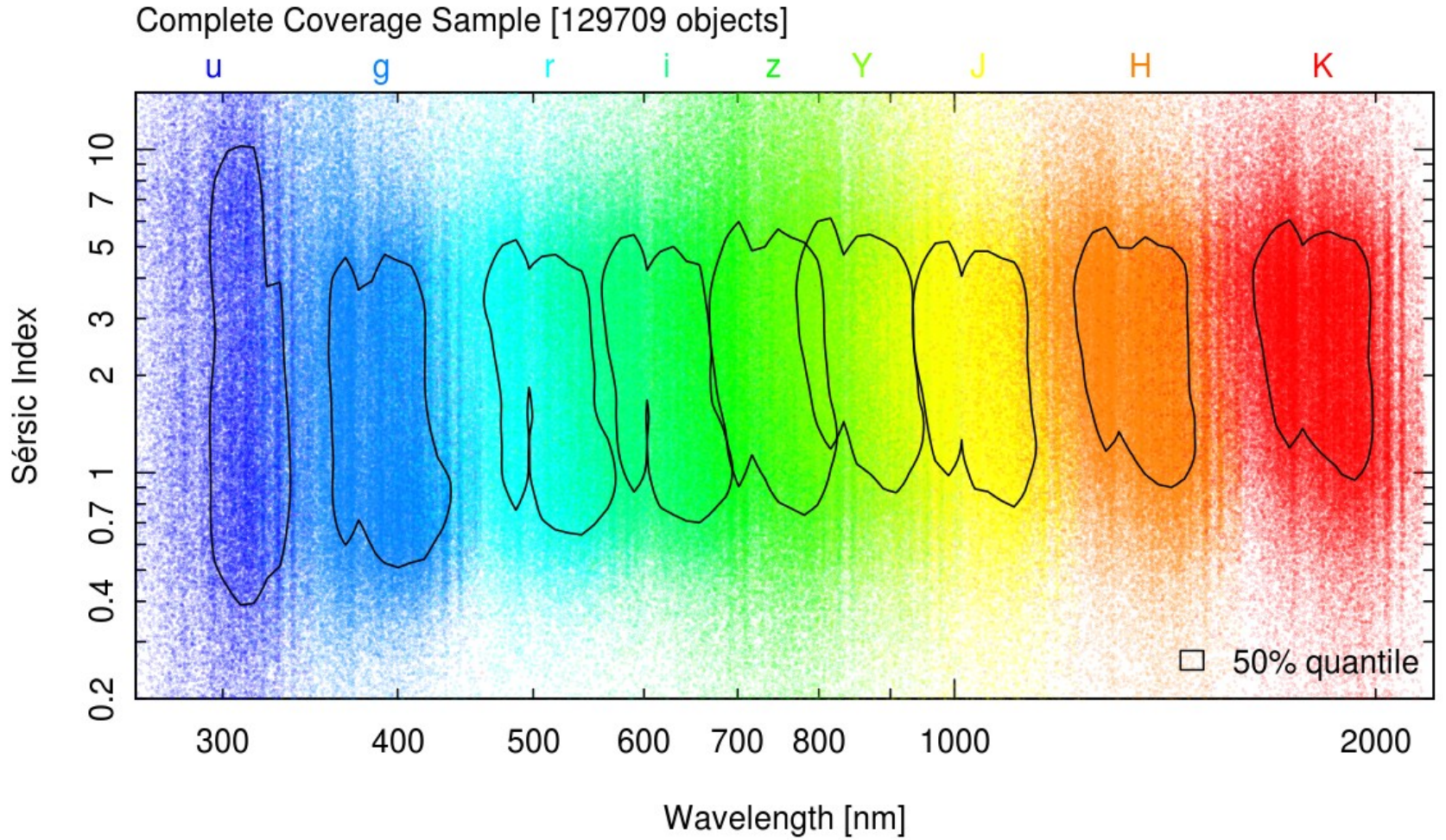


u → K:

- Increasing n



SIGMA: Global Distributions

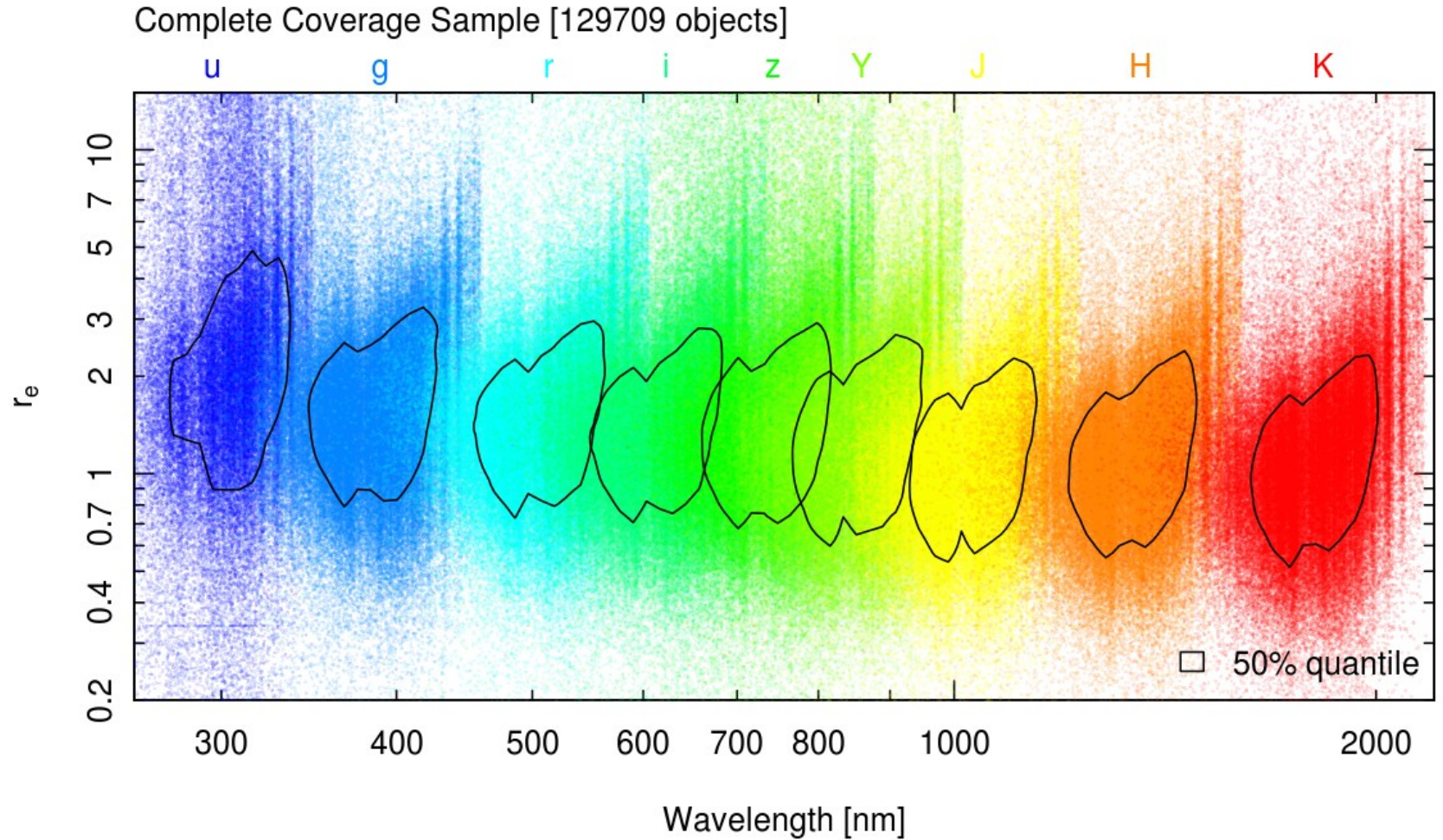


u → K:

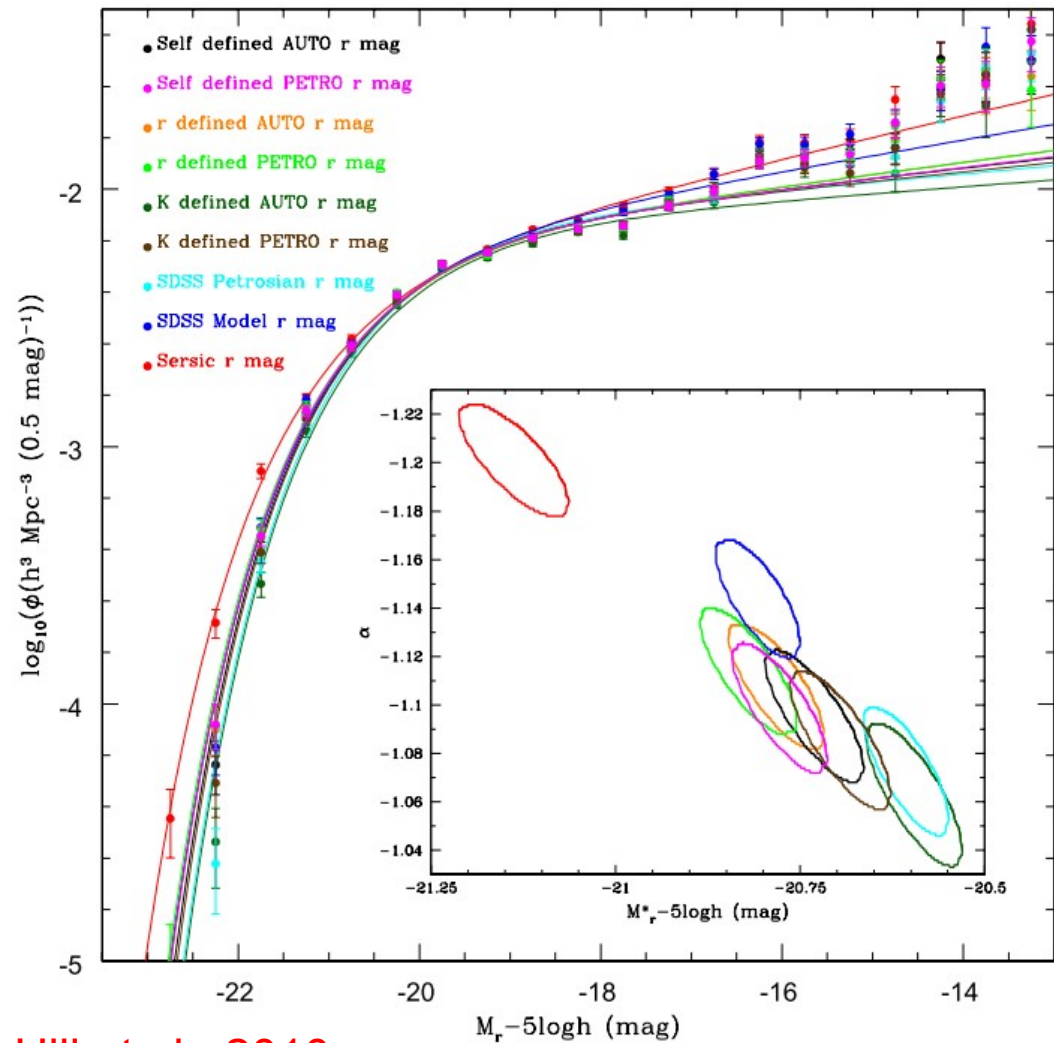
- Decreasing r_e



SIGMA: Global Distributions



- Sérsic photometry accounts for 'missing' light in the wings of galaxies not usually picked up by other aperture definitions.



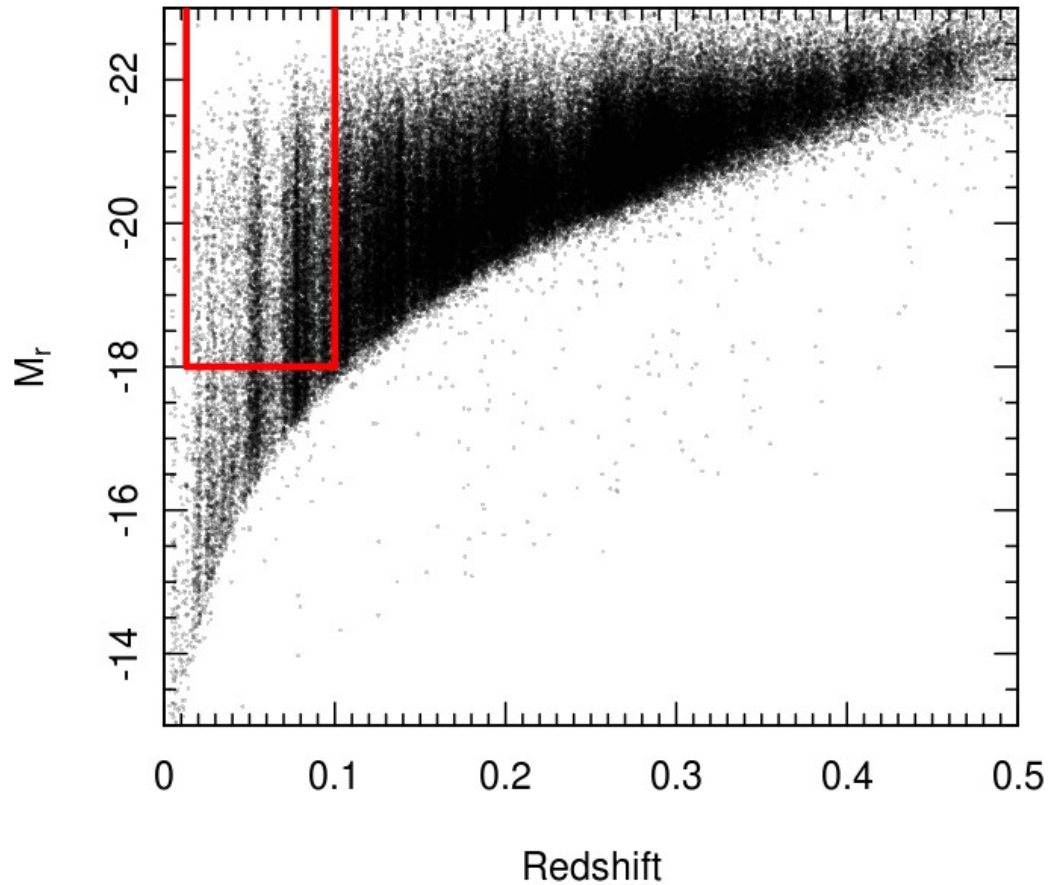
Hill et al., 2010

SIGMA: Volume Limited Sample

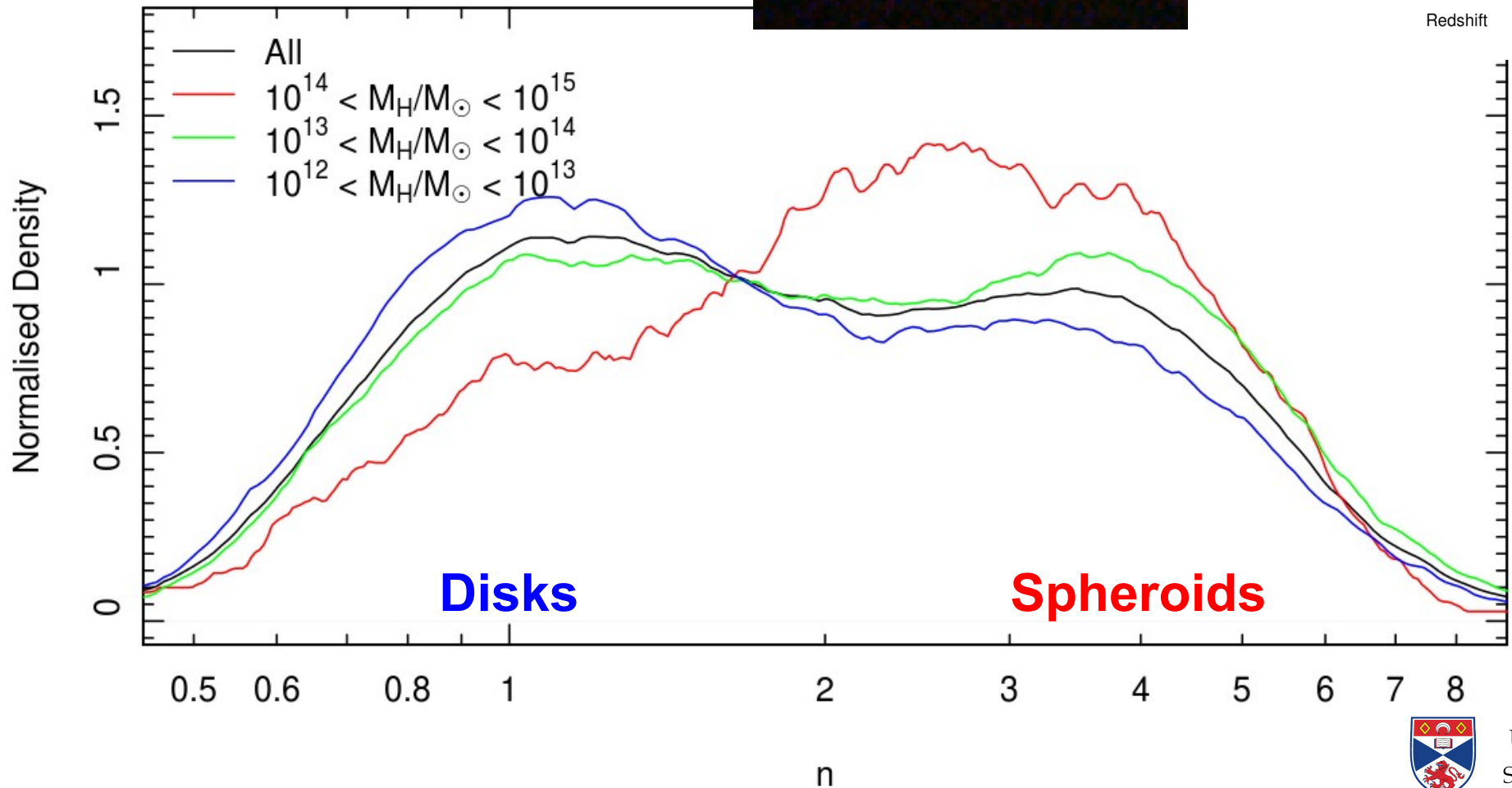
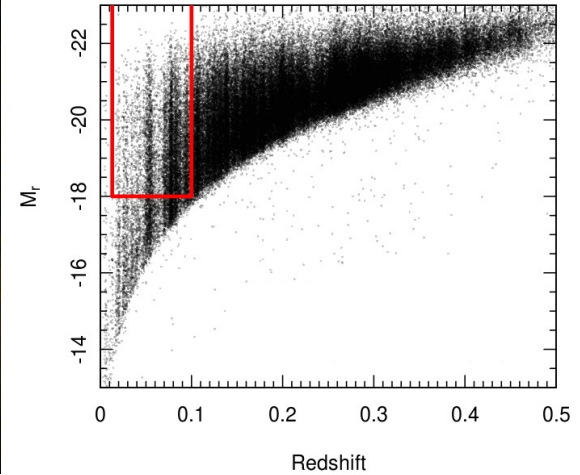
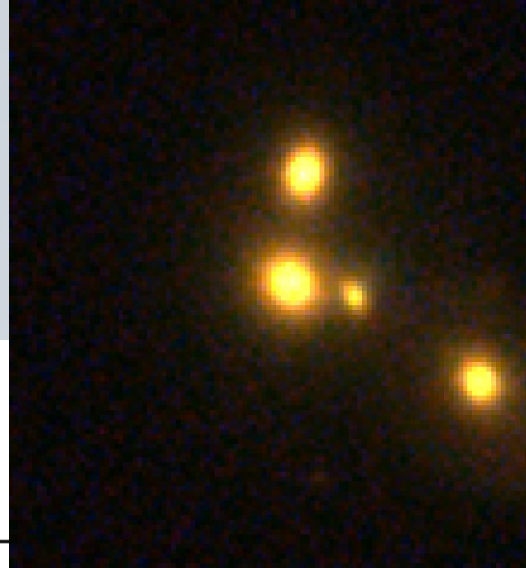


- $M_r < -18$
- $0.013 < z < 0.1$
- $nQ > 3$
- $r < 19.4$
- Coverage = ugrizYJHK

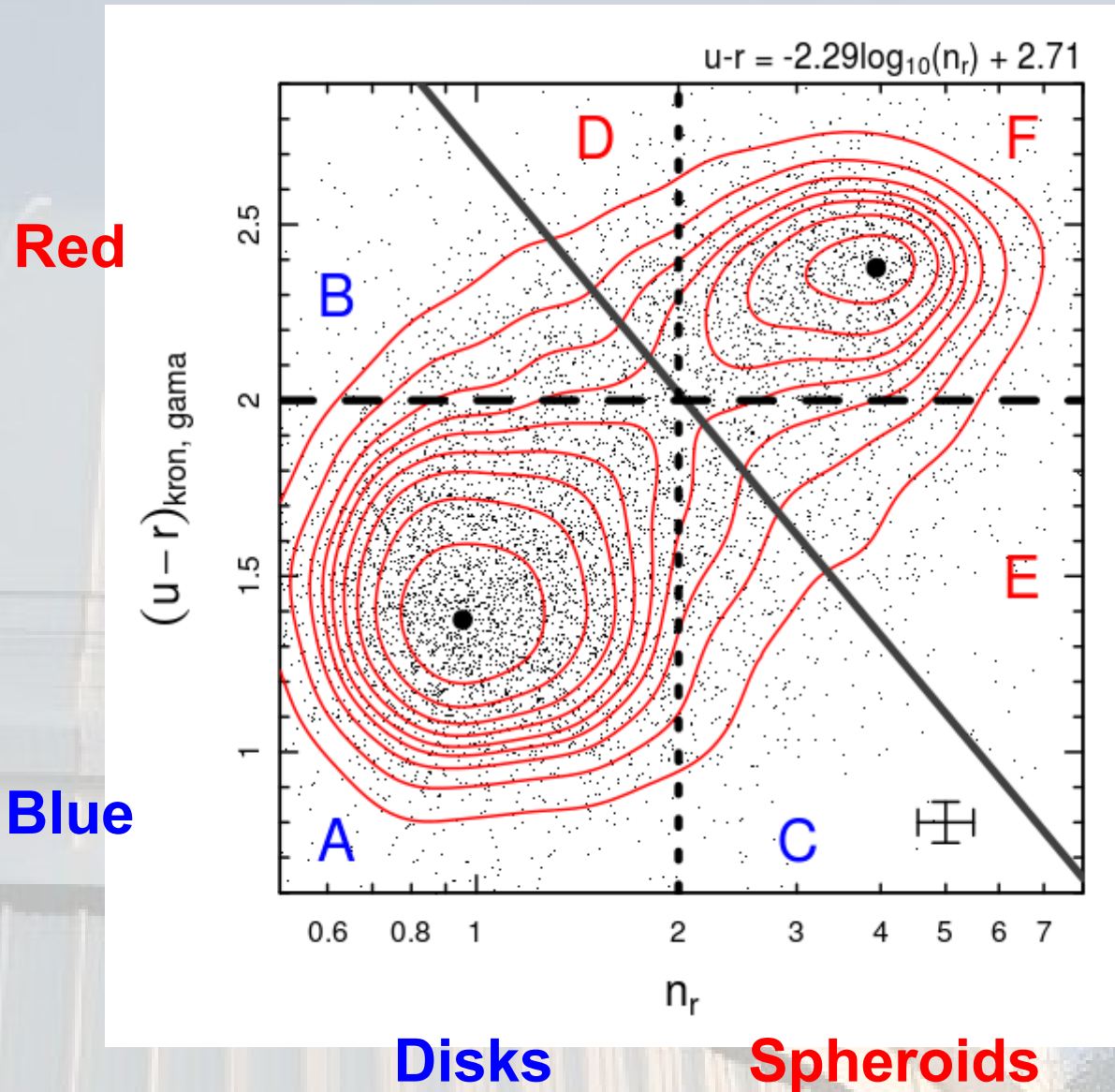
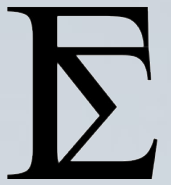
→ ~8,500 galaxies

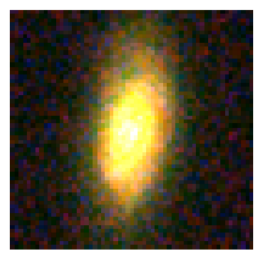


SIGMA: Group Mass

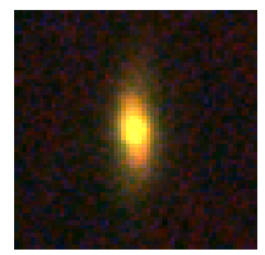


SIGMA: Automated Classification

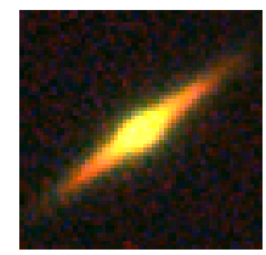




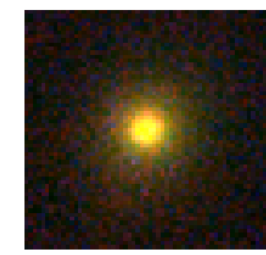
G00252005



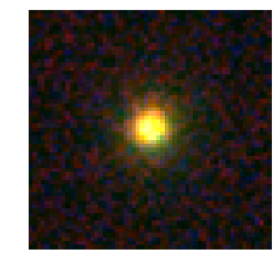
G00054957



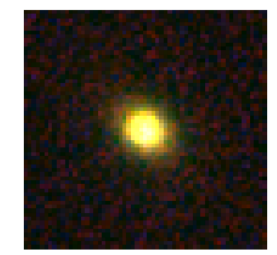
G00417433



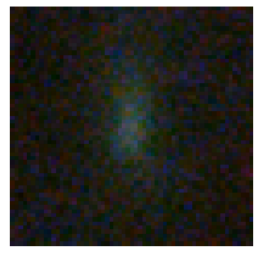
G00055009



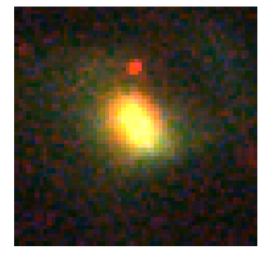
G00091399



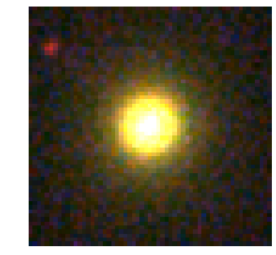
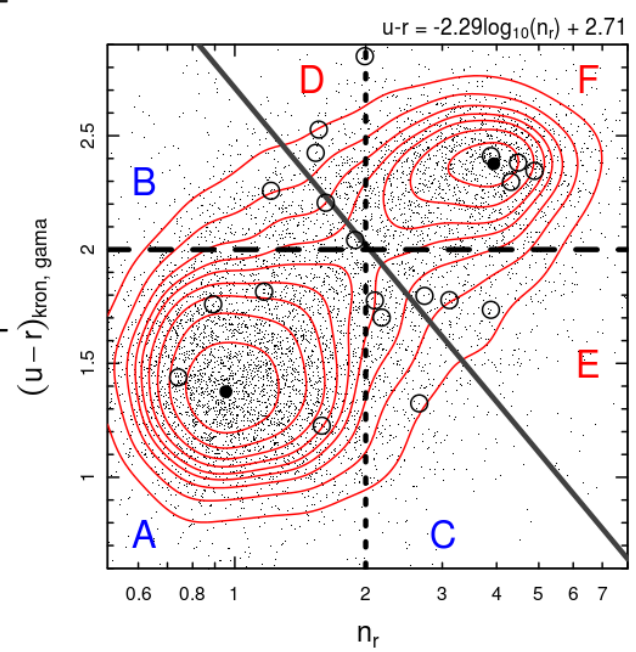
G00550225



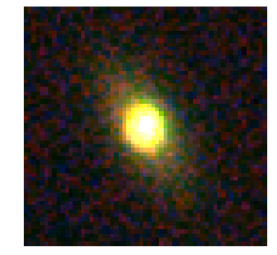
G00054455



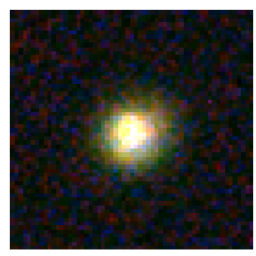
G00376990



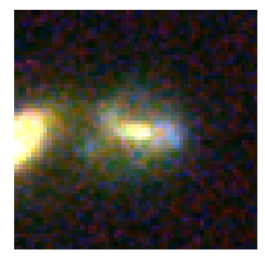
G00543489



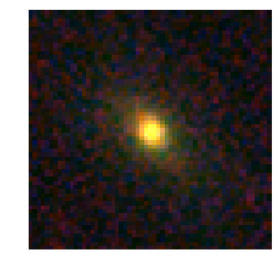
G00210375



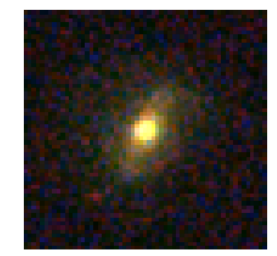
G00251143



G00509726



G00507974



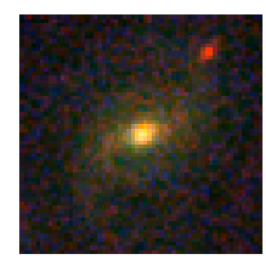
G00376028



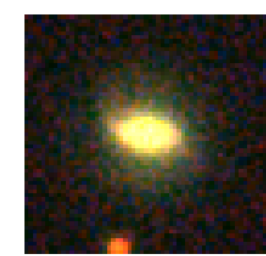
G00574008



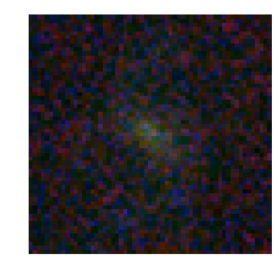
G00278847



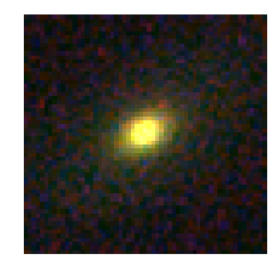
G00375793



G00085960

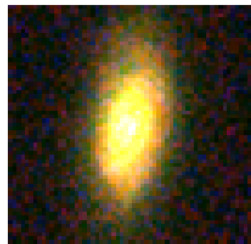


G00239692

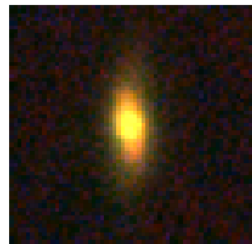


G00202443

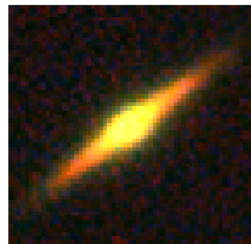
SIGMA: Automated Classification



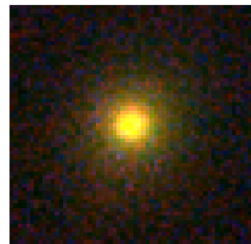
G00252005



G00054957



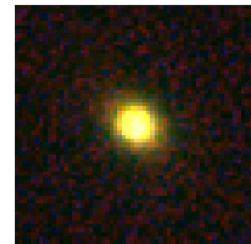
G00417433



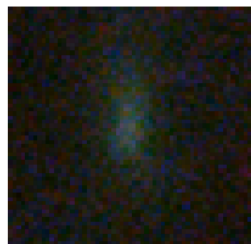
G00055009



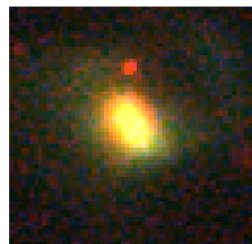
G00091399



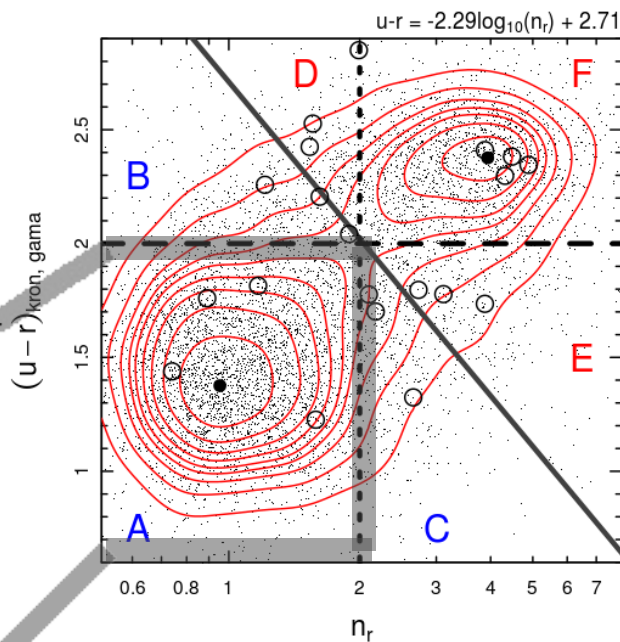
G00550225



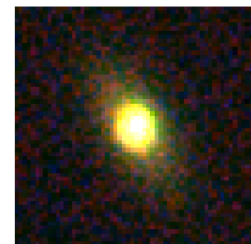
G00054455



G00376990



G00543489



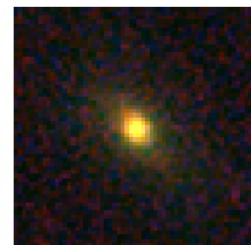
G00210375



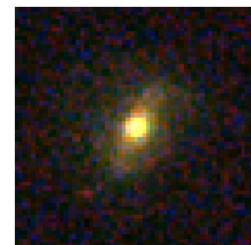
G00251143



G00509726



G00507974



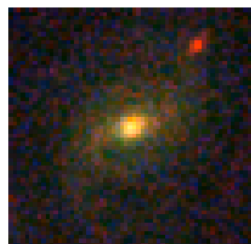
G00376028



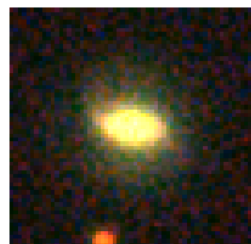
G00574008



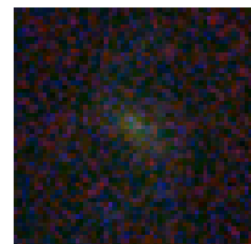
G00278847



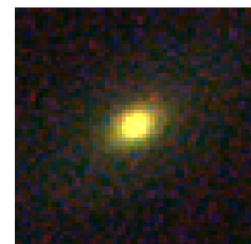
G00375793



G00085960

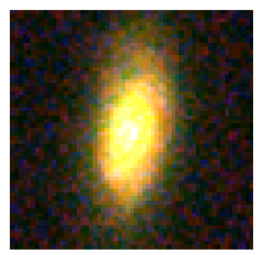


G00239692

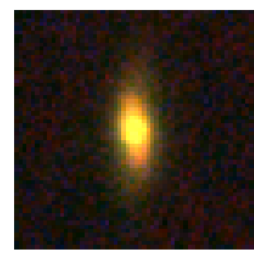


G00202443

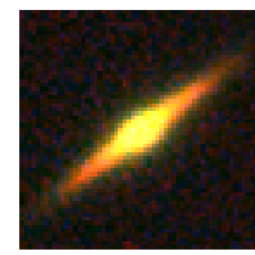
SIGMA: Automated Classification



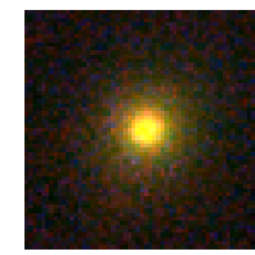
G00252005



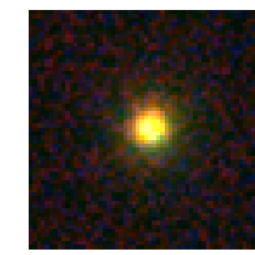
G00054957



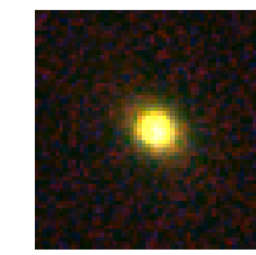
G00417433



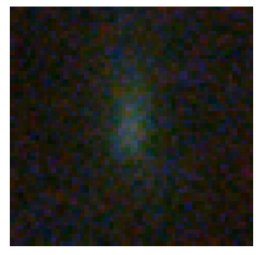
G00055009



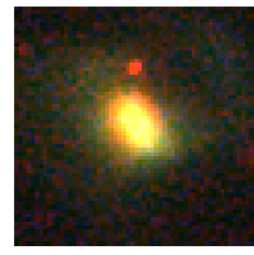
G00091399



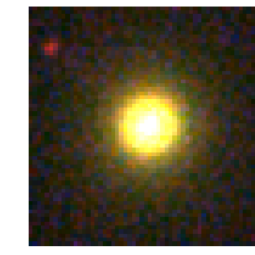
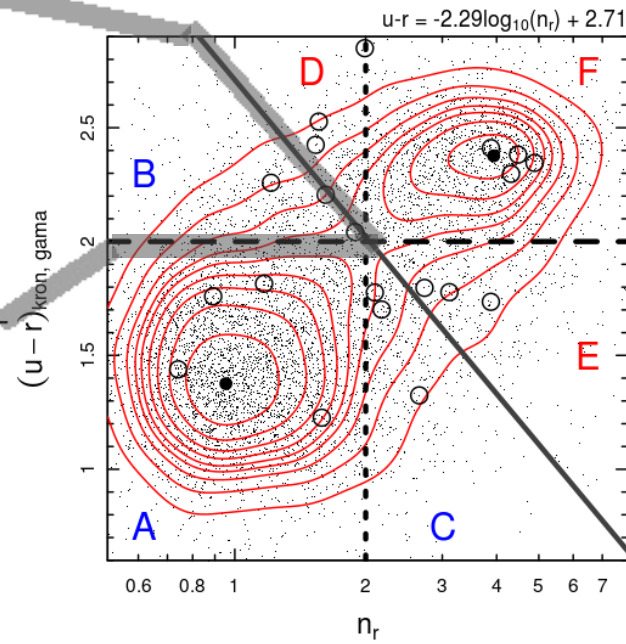
G00550225



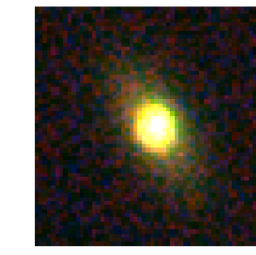
G00054455



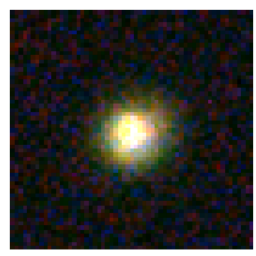
G00376990



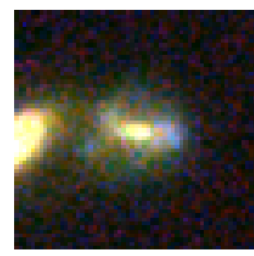
G00543489



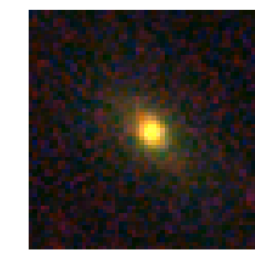
G00210375



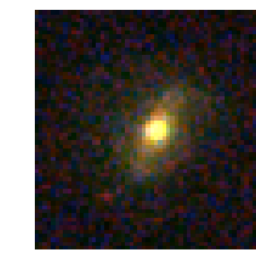
G00251143



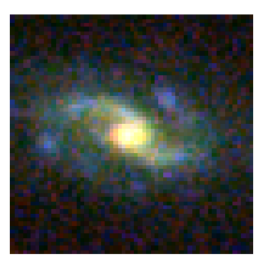
G00509726



G00507974



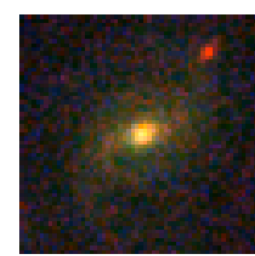
G00376028



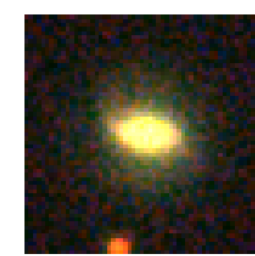
G00574008



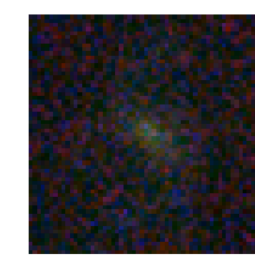
G00278847



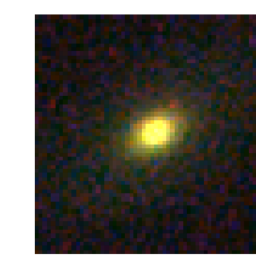
G00375793



G00085960

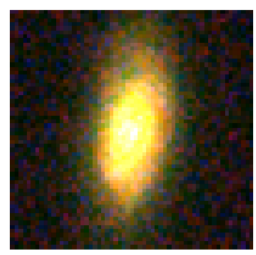


G00239692

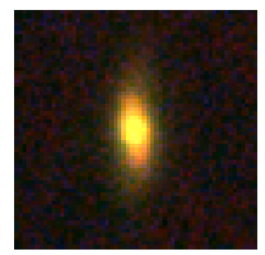


G00202443

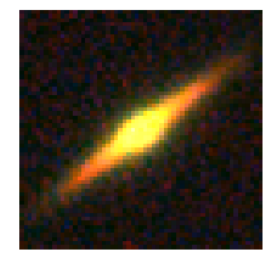
SIGMA: Automated Classification



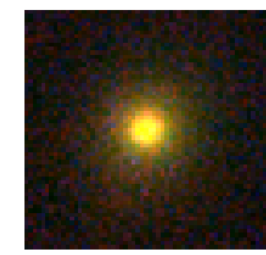
G00252005



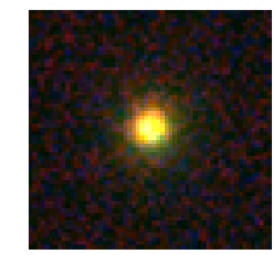
G00054957



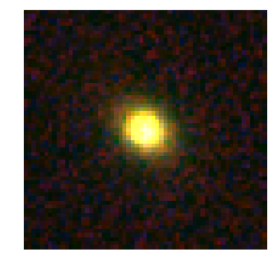
G00417433



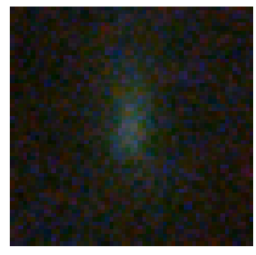
G00055009



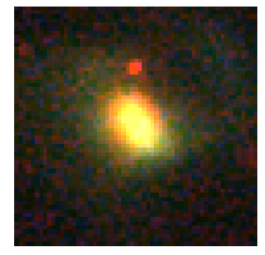
G00091399



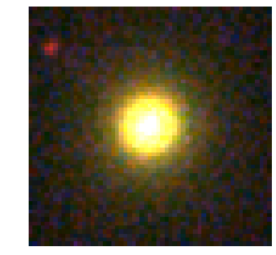
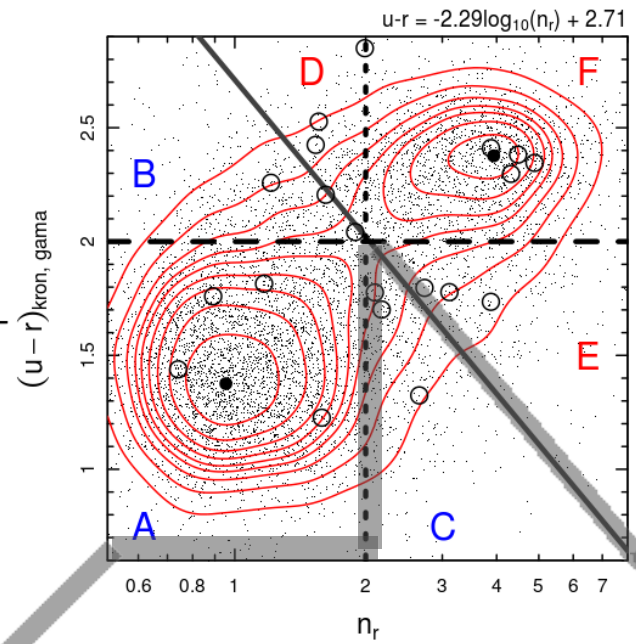
G00550225



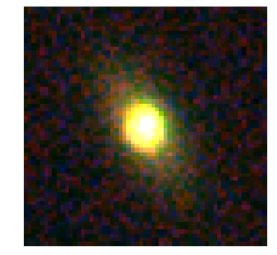
G00054455



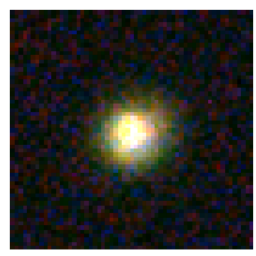
G00376990



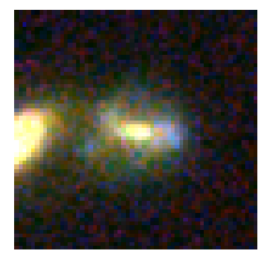
G00543489



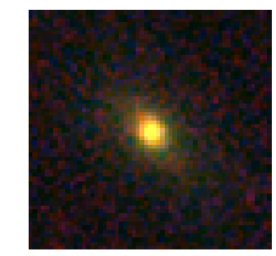
G00210375



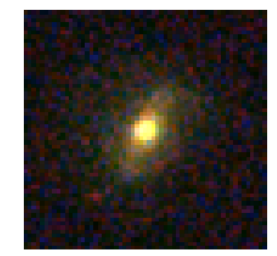
G00251143



G00509726



G00507974



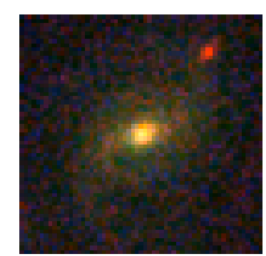
G00376028



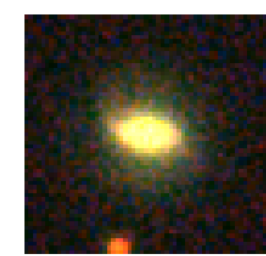
G00574008



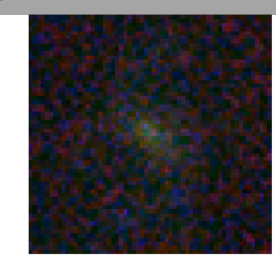
G00278847



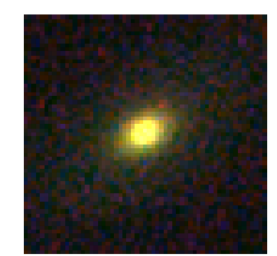
G00375793



G00085960

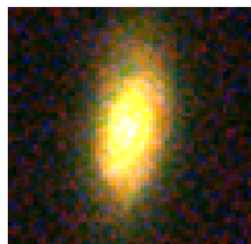


G00239692

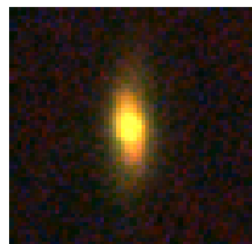


G00202443

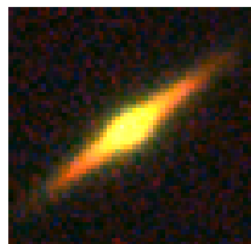
SIGMA: Automated Classification



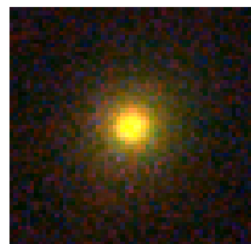
G00252005



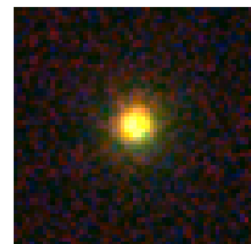
G00054957



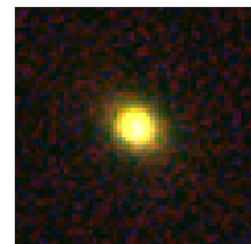
G00417433



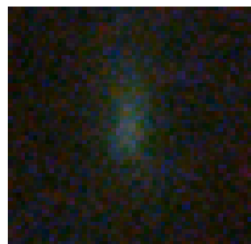
G00055009



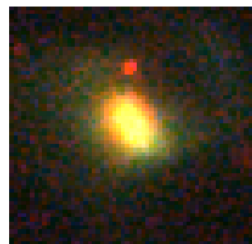
G00091399



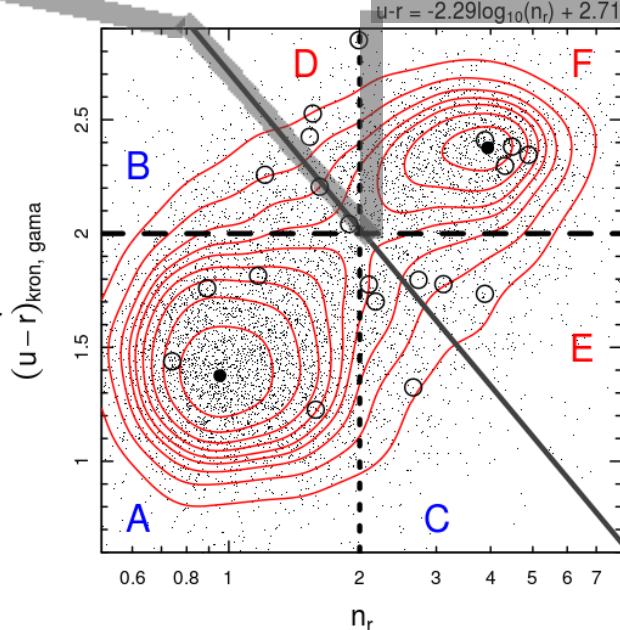
G00550225



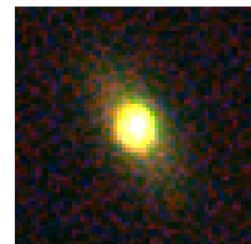
G00054455



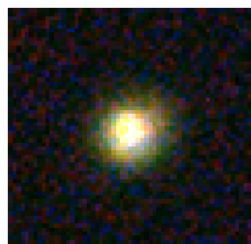
G00376990



G00543489



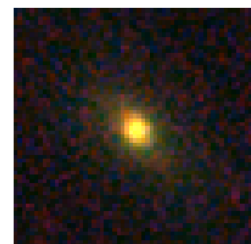
G00210375



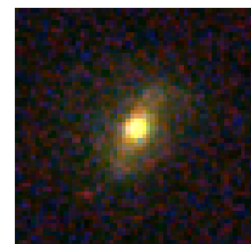
G00251143



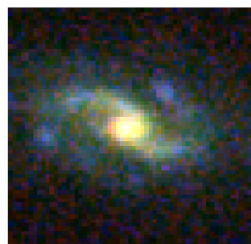
G00509726



G00507974



G00376028



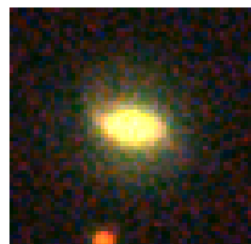
G00574008



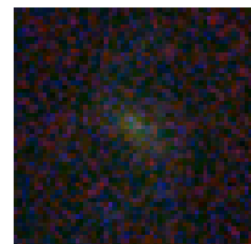
G00278847



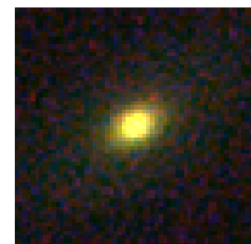
G00375793



G00085960

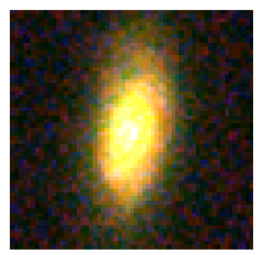


G00239692

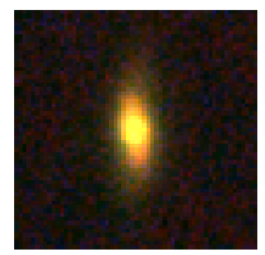


G00202443

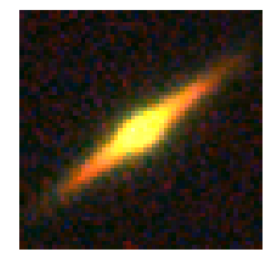
SIGMA: Automated Classification



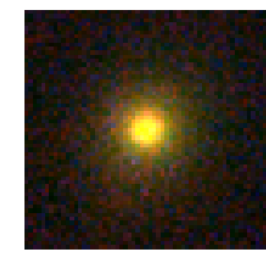
G00252005



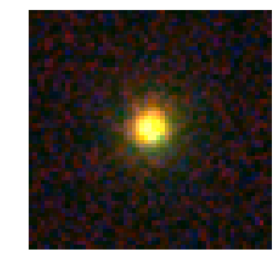
G00054957



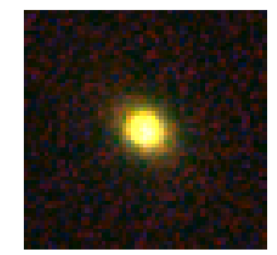
G00417433



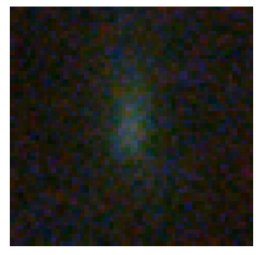
G00055009



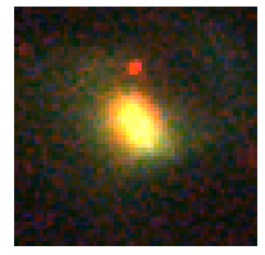
G00091399



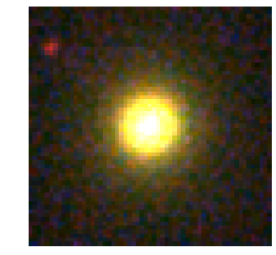
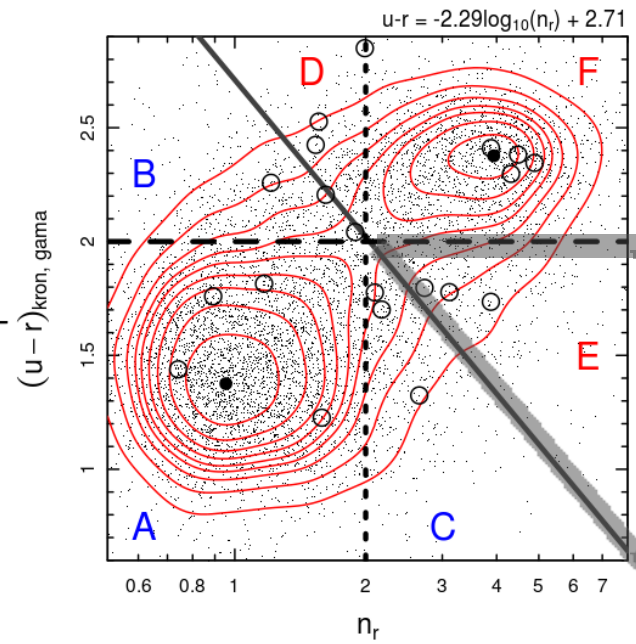
G00550225



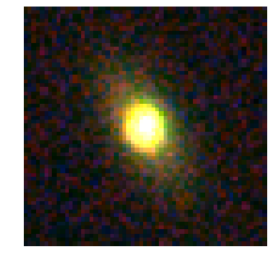
G00054455



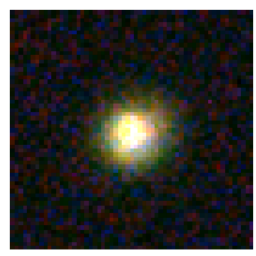
G00376990



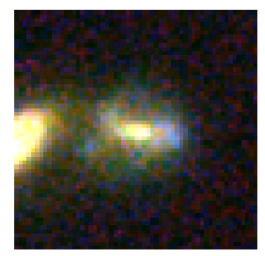
G00543489



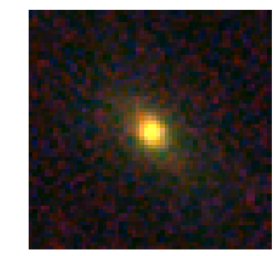
G00210375



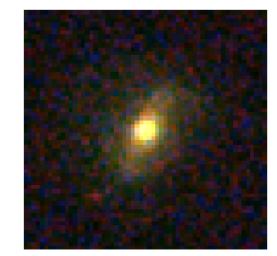
G00251143



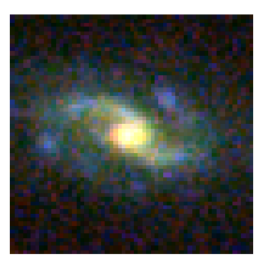
G00509726



G00507974



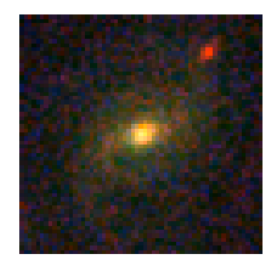
G00376028



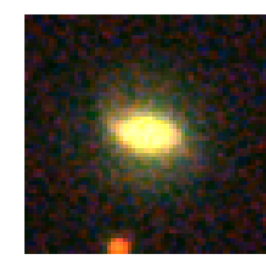
G00574008



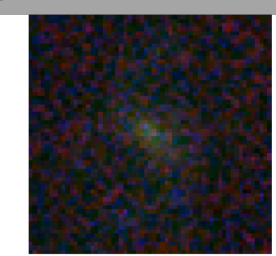
G00278847



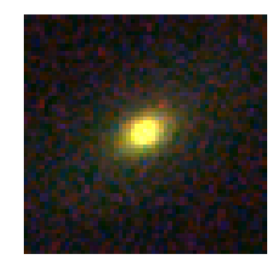
G00375793



G00085960

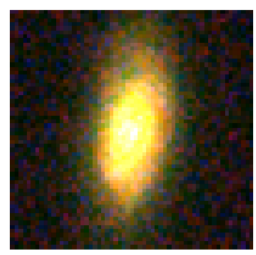


G00239692

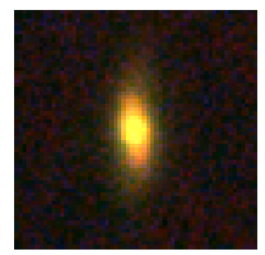


G00202443

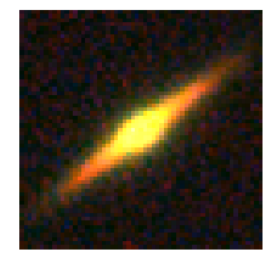
SIGMA: Automated Classification



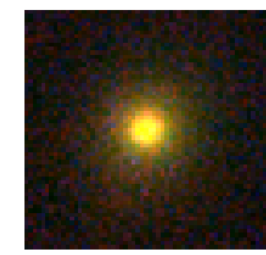
G00252005



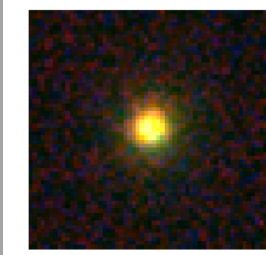
G00054957



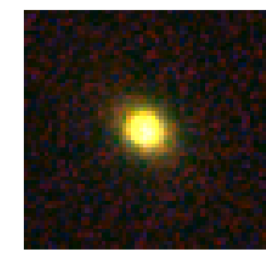
G00417433



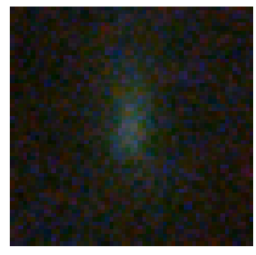
G00055009



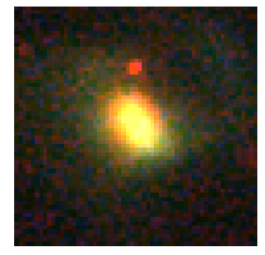
G00091399



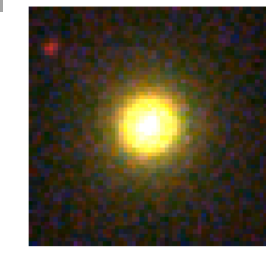
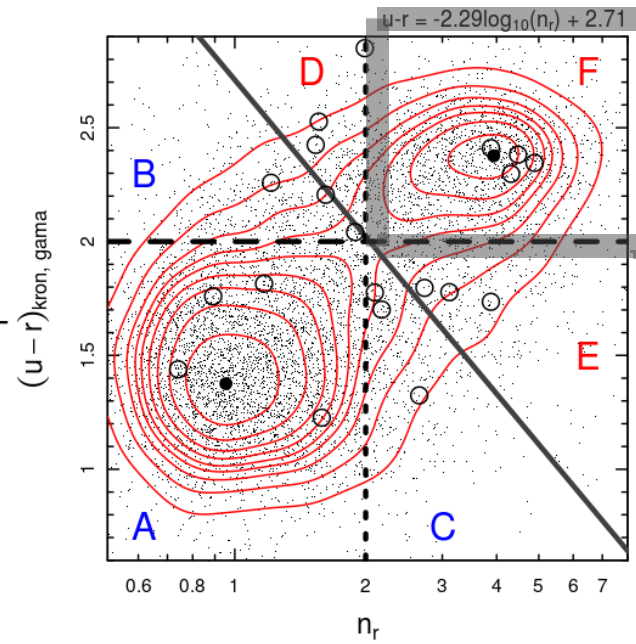
G00550225



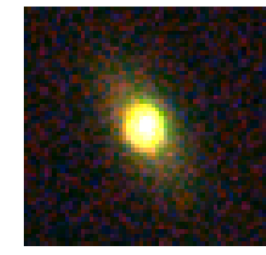
G00054455



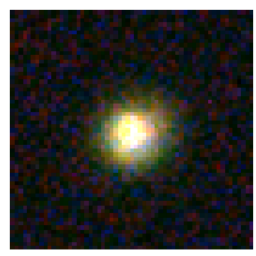
G00376990



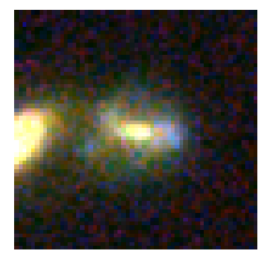
G00543489



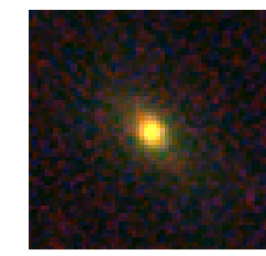
G00210375



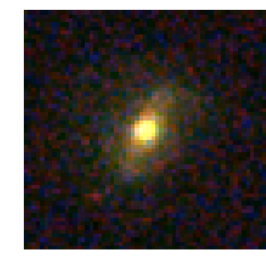
G00251143



G00509726



G00507974



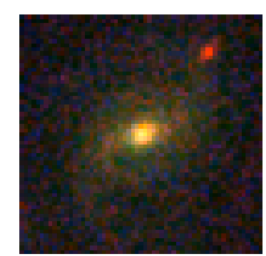
G00376028



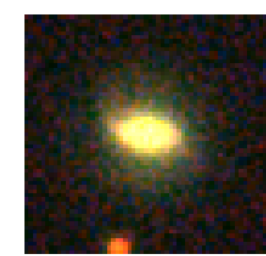
G00574008



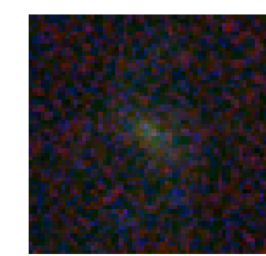
G00278847



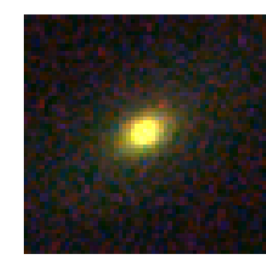
G00375793



G00085960

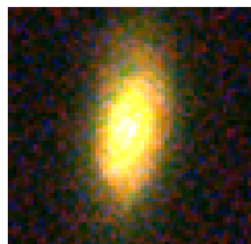


G00239692

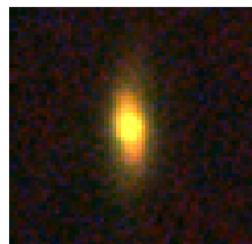


G00202443

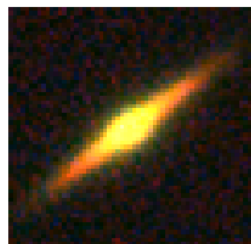
SIGMA: Automated Classification



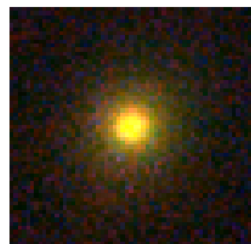
G00252005



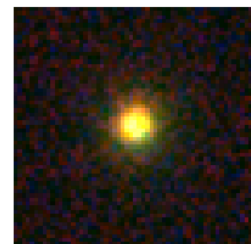
G00054957



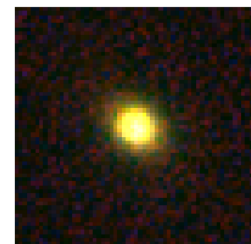
G00417433



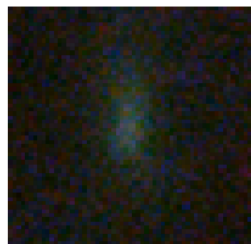
G00055009



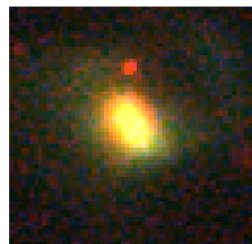
G00091399



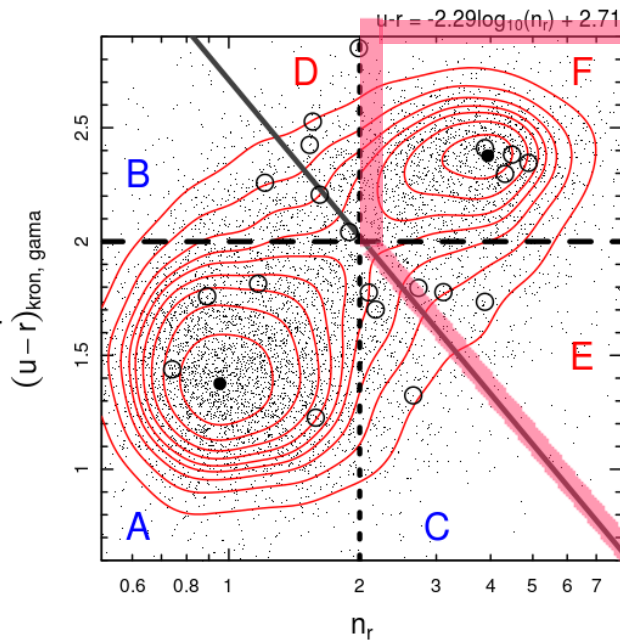
G00550225



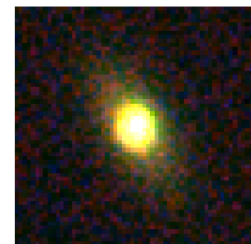
G00054455



G00376990



G00543489



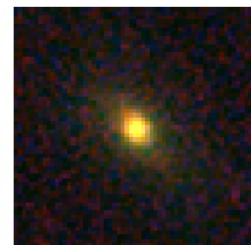
G00210375



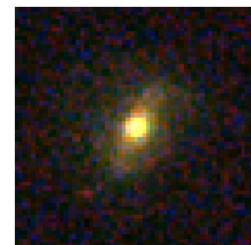
G00251143



G00509726



G00507974



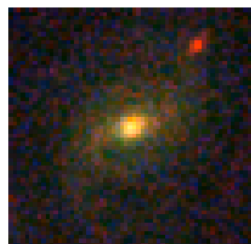
G00376028



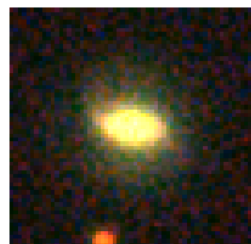
G00574008



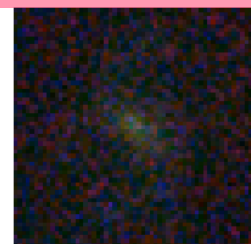
G00278847



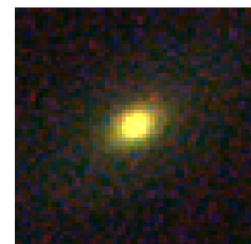
G00375793



G00085960

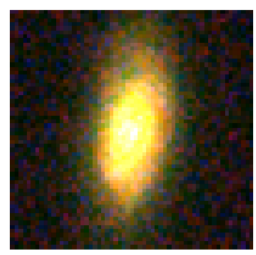


G00239692

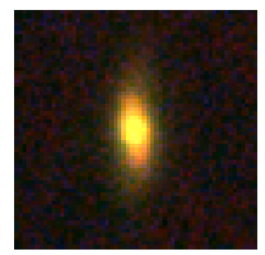


G00202443

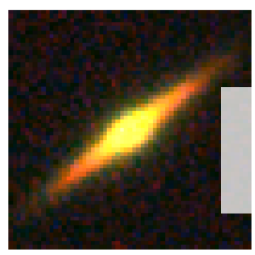
SIGMA: Stellar Mass Distribution



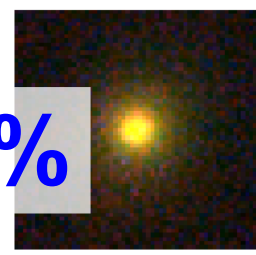
G00252005



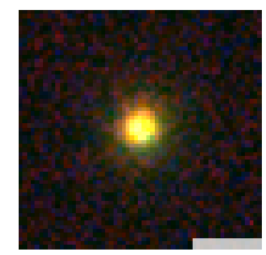
G00054957



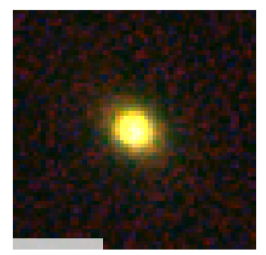
G00417433



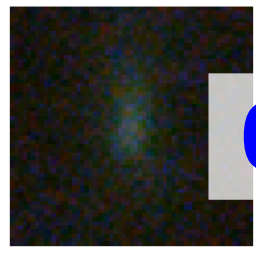
G00055009



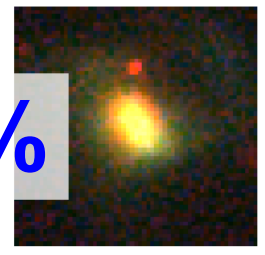
G00091399



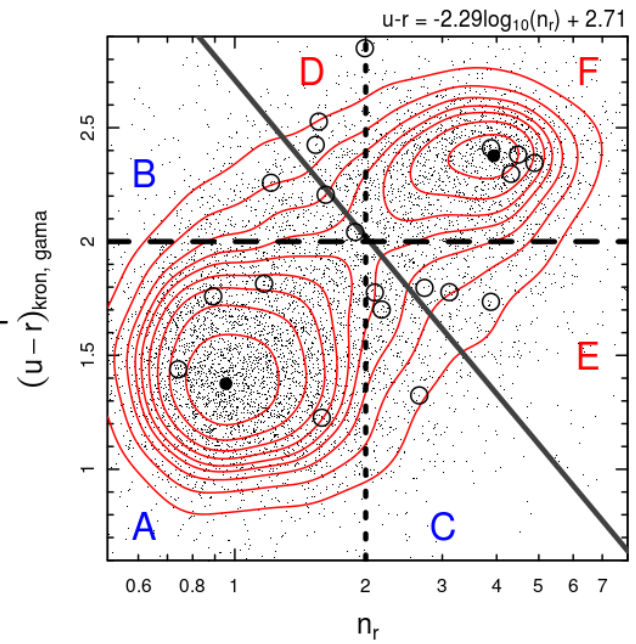
G00550225



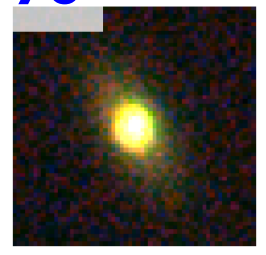
G00054455



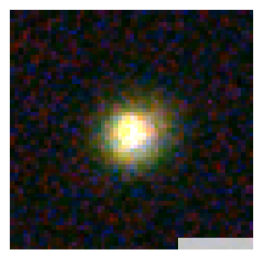
G00376990



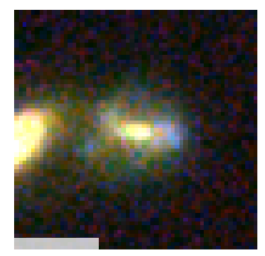
G00543489



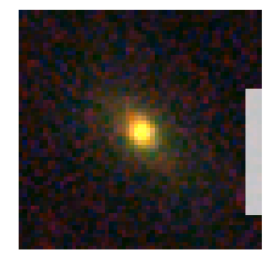
G00210375



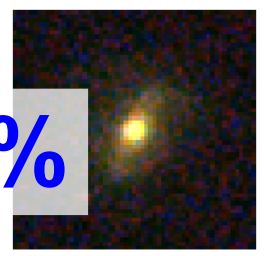
G00251143



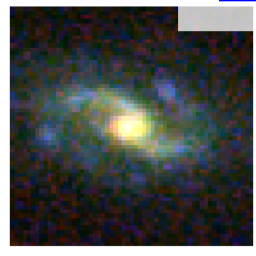
G00509726



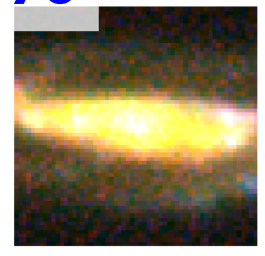
G00507974



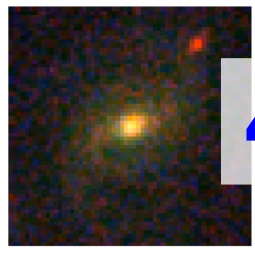
G00376028



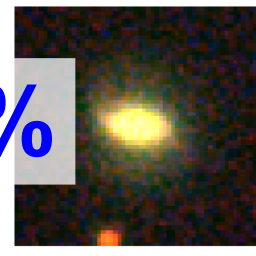
G00574008



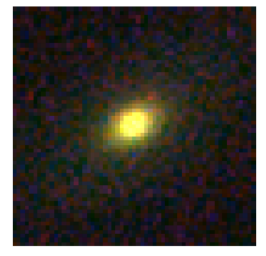
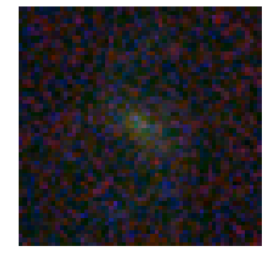
G00278847



G00375793



G00085960



6%

4%

56%

8%

4%

Stellar Masses: Ned Taylor

Summary

- Single-Sérsic photometry provides a method of producing meaningful structural parameters in a fast and efficient manner.
- A good way of recovering missing light in the wings of galaxies.
- Important to use multi-wavelength data to probe different stellar populations.

What Now?

SersicCatv7:

- A high-fidelity sample of ~150,000 galaxies with measurements of effective radii, Sérsic indices, Sérsic magnitudes and other physical properties.
- > 95% success rate
- Passed GAMA Quality Control! → see **Kelvin et al. 2011** (in prep.)

What Next?

- Full structural decomposition!
 - Which multi-component model is the 'best'?
- Further exploration of how physical properties (e.g.: Sérsic index, size) relate to Stellar Mass/Environment/Morphology.
- Study of the evolution of spheroidal and disk like structures – do bulges have a similar formation mechanism to ellipticals?